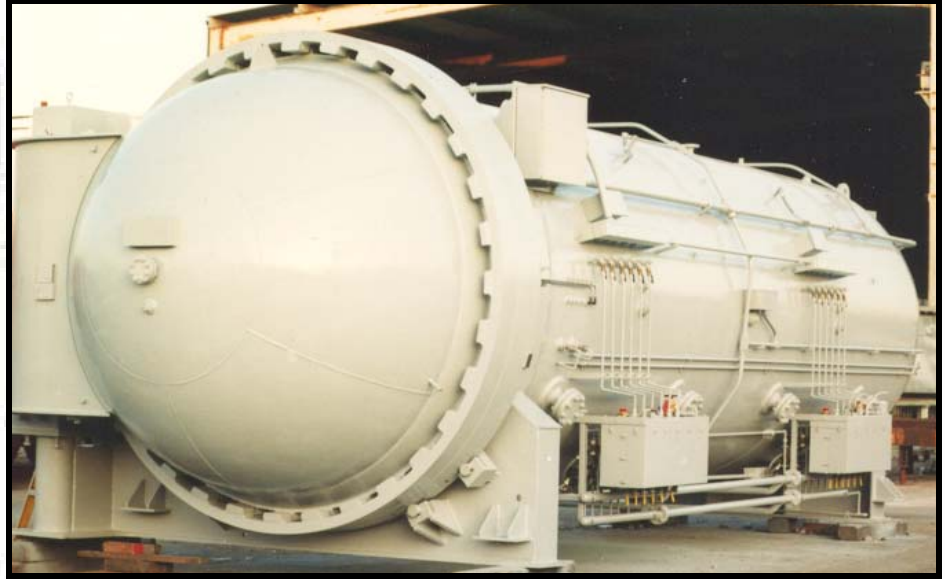


- **Modernization**
- **Upgrading equipment capabilities**
- **Repair**
- **New cooling and heating coils**
- **Auxiliary systems**
- **Shop or field retrofit**



ASC specializes in retrofitting and refurbishing existing autoclaves, ovens, and presses. Whether your equipment needs a new control system, or a complete mechanical and electrical upgrade, ASC has the knowledge and experience required to provide a successful modernization effort.

Component retrofit and refurbishment

ASC can provide new heating coils, cooling coil/radiators, thermocouples, vacuum lines, and any other component you require. We fabricate coils and heaters for TEC, Baron, and other autoclave equipment. Don't get caught paying a premium price from the original manufacturer of the autoclave – ASC can provide provide this service at an affordable price.

CPC control system retrofit

ASC has installed hundreds of CPC control systems on existing autoclaves, ovens, and presses. We are experts at identifying the hardware and installation requirements of autoclaves (TEC, Baron, A&A, Melco, Taricco, etc.), ovens (Despatch, Grieve, etc.), and presses (PHI, Wabash, etc.).

Installation of CPC increased equipment capabilities and operational efficiency of the cure cycles.

Insulation and interior refurbishment

Do you need your equipment to operate at higher temperatures? ASC can re-insulate your autoclave or oven to increase the operating temperatures up to 2000 °F.

NDT and vessel inspection/repair

ASC can provide NDT inspection of your autoclave ves-

sel for detrimental wear, cracks, weld integrity, and fatigue. In most cases, weld and mechanical problems can be corrected upon receiving the results.

ASME certified

ASC has been certified by ASME for pressure vessel building and repairing. We have U, UG, and R stamps.

Boeing certified retrofit

ASC are experts at modernizing equipment to meet the certification requirements of Boeing, Airbus, and other major aerospace companies.

Call today for a free site-visit and consultation

