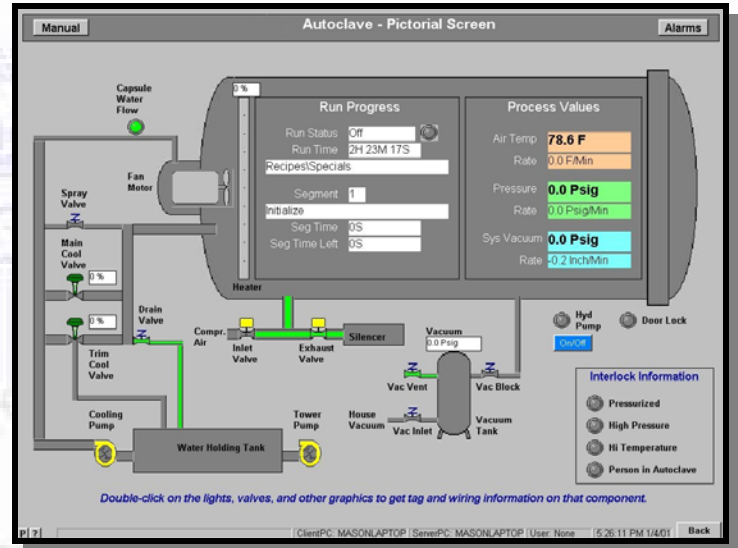


- Composite Processing Control for Windows NT
- World's leading software for autoclave, oven, and press control
- Control, data-acquisition, quality control, reporting, SPC, and more
- More than 1000 pieces of equipment world-wide



### Control by the part

Whether its an autoclave, oven, press, or other piece of equipment, CPC controls the equipment temperature based on the part. Unlike other competitive software products on the market, CPC also provides a host of user-configurable part-control options and features that allow greater flexibility for the user.

### Multi-equipment capability

CPC is the only software that can control multiple pieces of equipment from a single-PC station or dual-PC platform. For the last 13 years, CPC systems have been retrofitted to over 1000 pieces of equipment in the composites processing industry, working in both heavy production, and laboratory duties.

### Client-server architecture

CPC advanced client-server architecture allows multiple security-locked client terminals to access, view, and control equipment real-time. Maintenance personnel can monitor and track motor hours or utility usage, QA/QC personnel can perform automatic buy-off of loads, engineering personnel can run SPC analysis reports, all along while operators load parts, initiate and monitor active equipment runs. Isn't it time that a system functioned to integrate your processes?

### Bulletproof dual-PC Architecture

Dual-PC redundancy is standard on all new and retrofitted CPC systems. In the unlikely event of a primary station failure, the backup PC automatically and seamlessly assumes control of the process. All process and historical data is maintained.

### Integrity checking

CPC has a comprehensive Integrity Check system that not only checks that all part information is entered correctly, but also insures proper thermocouple attachment, vacuum hose connection, header draw-down, bag draw-down, and leak test

results. The results of these integrity checks are stored to the run's data-file for post-run quality inspector analysis.

### Part & tool management

CPC can integrate your MPS, tooling, engineering and production cells together with the aid of our fully-featured part and tool databases. Cure programs, part diagrams, leak check requirements, specification linking, and bar-coded retrieval are just some of the advanced database features included with every CPC system. Tool database support includes tool cycle tracking, and thermal mass load analysis.

### Multi-media capabilities

Client-to-Client messaging, email and video alarming, full-color equipment photos, point-and-click on-screen help, and maintenance requests and work-order generation are standard features with every system.

### Part Quality Control and Analysis

CPC features post-run part and batch level quality analysis which can automatically scan the cure data and perform a detailed part-by-part analysis against Boeing, Airbus, BAE, or any other material specification. Automatic exception reports and electronic "buy-off" is also supported

### Full-Featured Reporting & SPC

CPC features full-color custom reports, either on-screen or hardcopy for all of your post-run data requirements. CPC features an integral SPC engine for custom SQL queries of load, part, equipment or department data analysis. No other system has this functionality.

### Price

Software price ranges from \$3,500 to \$7,500 per seat, depending on quantity. Turnkey systems (hardware, software, installation, training) range from \$15,000 to \$150,000 depending on equipment size, complexity, and sensor quantities.