

Topic Sheet on
Remote Data Saving & Reporting
with CPC/NT

Copyright © 2001, ASC Process Systems, Inc.

Revised: 6/5/01

Remote Data Saving and Reporting with CPC-NT

This topic sheet discusses the remote data capabilities of CPC-NT. This topic sheet is a supplement to the CPC-NT Operations Manual provided for users who wish to take full advantage of the specialized features of CPC/NT.

This document discusses configurations using the Object Editor. You can learn more about how to use the object editor by viewing pages 10-1 through 10-4 in the Script Maintenance section of the CPC-NT Manual (see www.aschome.com for PDF copy).

What is a datafile?

A CPC-NT datafile is a single file that contains all information about a run. The datafile contains part information, attached sensor information, alarm messages, cure recipe, and interval (ie. every 1 min) data for the entire length of the run.

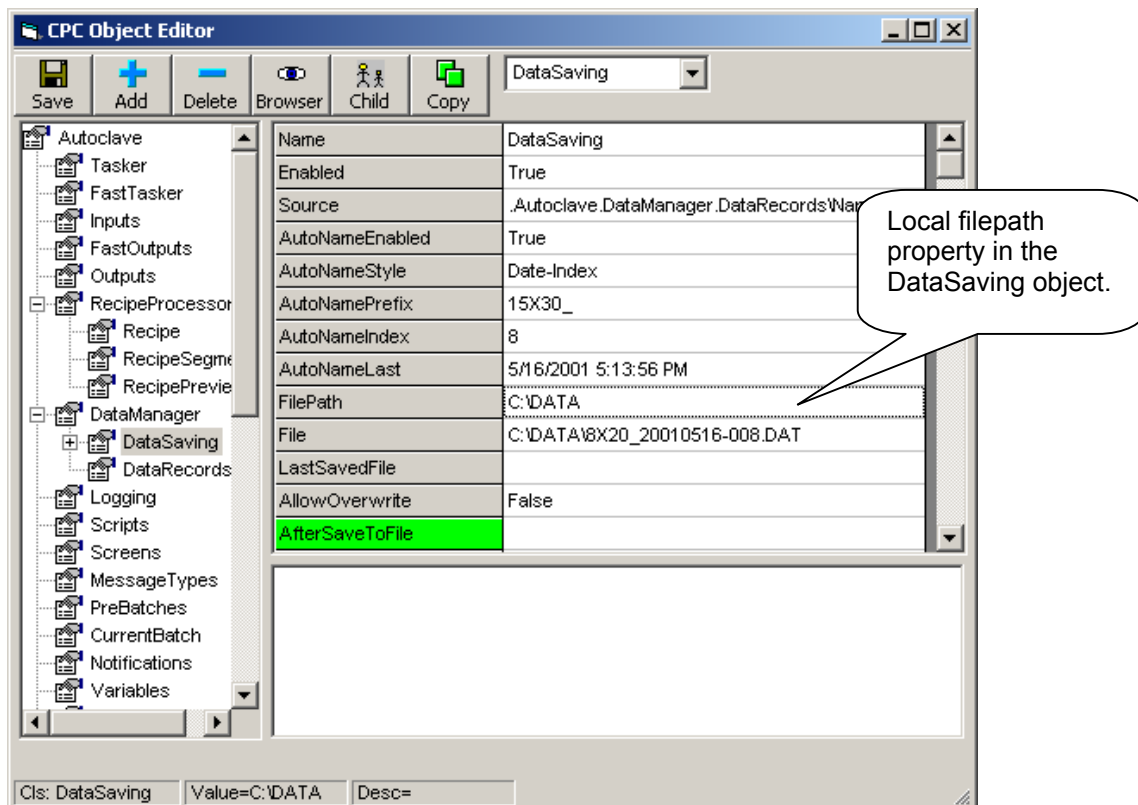
When is a new datafile created?

At the start of a run the CPC-NT software creates a new datafile with a sequential or time-stamped name and a DAT suffix. (ie. AC4_20010101-002.DAT)

The creation of the datafile and the information initially saved to it is configured in a "BeforeStartRun" quick-script in the RecipeProcessor object. You can view this script with Engineering security access.

Where is the datafile saved?

The datafiles are saved to a local default directory, usually configured to C:\DATA. The default local file path is a property of the **DataSaving** object within the CPC-NT configuration structure. *You can configure this property by using the ObjectEditor.*



How do I save CPC-NT datafiles to a remote source?

Due to the possibility of network and/or remote server failure, does not suggest putting a remote file path in the **FilePath** property. Instead, we suggest that you configure the system to archive the local datafile to the remote location at the conclusion of the run.

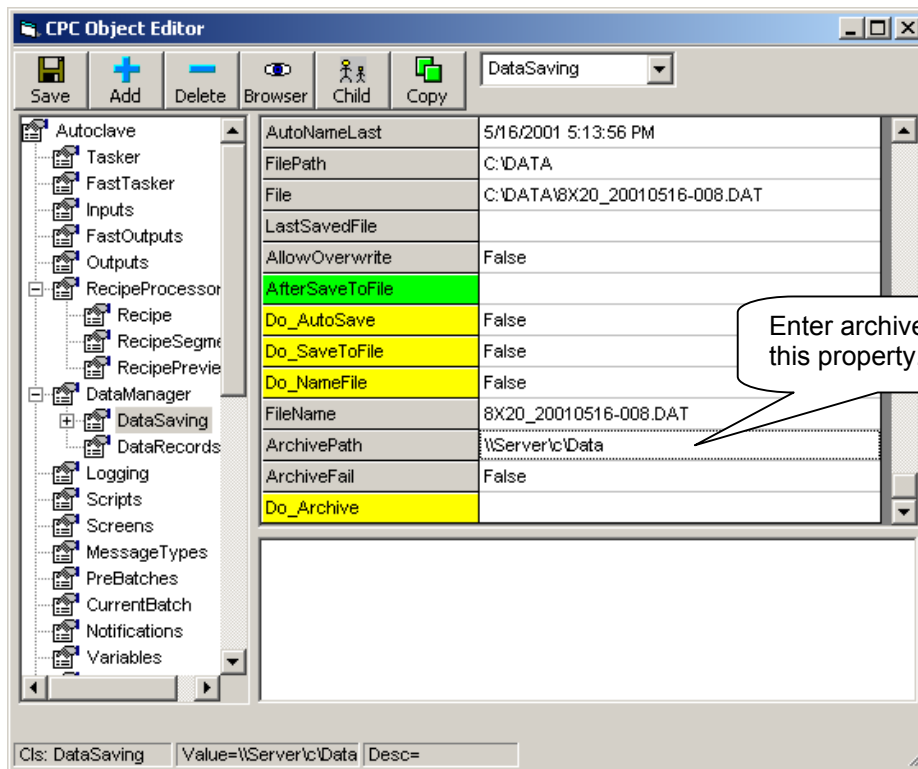
What does an automatic data archive do?

At the end of the run the system will automatically copy the local datafile to the remote archive path.

How do I setup an automatic data archive at the end of the run?

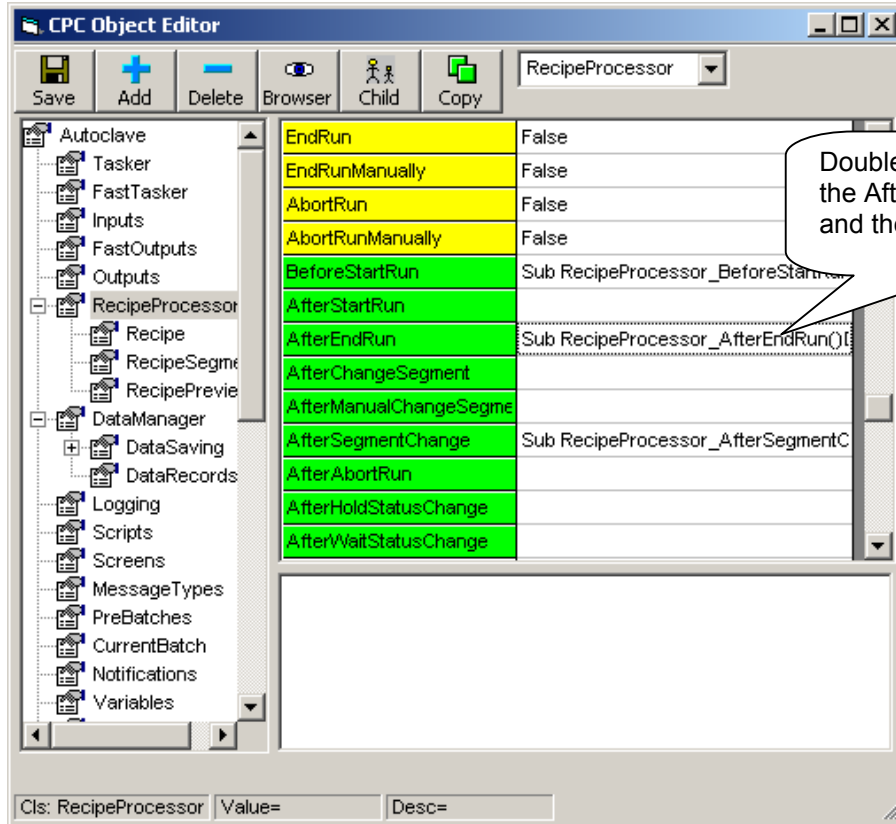
The following procedure is offered to configure an automatic archive:

- 1.) Enter the archive path in the **ArchivePath** property of the DataSaving object. You'll need to scroll down the list of properties until you see this one. The archive path should include the network path to the directory you choose. *Note: ASC recommends the "\\" method rather than a mapped network drive.*



- 2.) Next you'll need to instruct the system to perform the archive at the end of the run. This will require an addition to the **AfterEndRun** quick-script in the RecipeProcessor object.

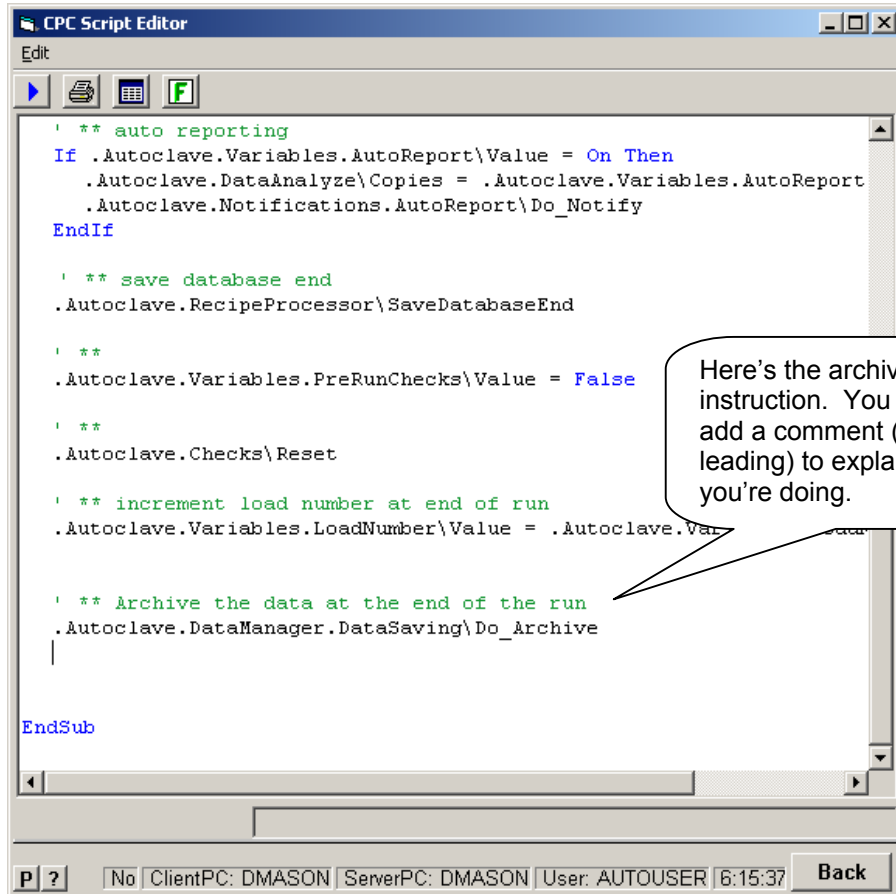
To edit this script you'll need to double-click the AfterEndRun row to enter the script editor.



- 3.) Scroll down and add the following line (exactly) to the end of the quick-script (above the EndSub line):

```
.Autoclave.DataManager.DataSaving\Do_Archive
```

Your quick-script will look different, but here's an example:



```
CPC Script Editor
Edit
' ** auto reporting
If .Autoclave.Variables.AutoReport\Value = On Then
  .Autoclave.DataAnalyze\Copies = .Autoclave.Variables.AutoReport
  .Autoclave.Notifications.AutoReport\Do_Notify
EndIf

' ** save database end
.Autoclave.RecipeProcessor\SaveDatabaseEnd

' **
.Autoclave.Variables.PreRunChecks\Value = False

' **
.Autoclave.Checks\Reset

' ** increment load number at end of run
.Autoclave.Variables.LoadNumber\Value = .Autoclave.Var

' ** Archive the data at the end of the run
.Autoclave.DataManager.DataSaving\Do_Archive

EndSub

P ? No ClientPC: DMASON ServerPC: DMASON User: AUTOUSER 6:15:37 Back
```

- 4.) Now click the X on the quick-script and save the results.

How can I create a global run database on a remote server?

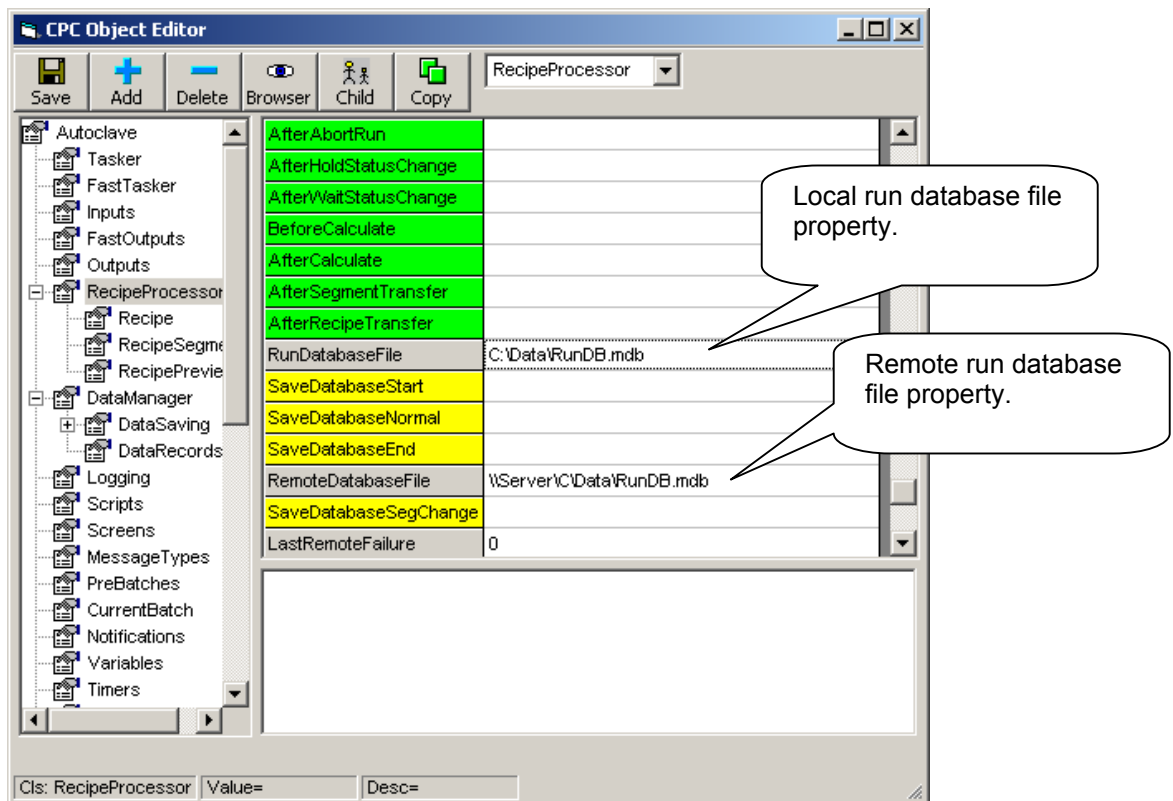
The following information is offered to explain the remote capabilities of the CPC-NT run database engine.

What is the run database?

CPC-NT creates and maintains an extensive run database that includes part information, cure cycle information, alarms, and other information to be used for searches, queries, and SPC reporting. The Run Database does not include the raw numeric data, but it does have a unique relational record for each run, each part, each recipe, and a number of other parameters.

Where is the database saved?

The database file is normally named RunDB.mdb and is saved to the default data directory. The name and path of the database is configured in the **RunDatabaseFile** property in the RecipeProcessor object. See the example below:



How do I setup a remote database?

Remote or server-based databases are useful in order to have multiple control systems/equipment writing records to the same database.

CPC-NT is designed to not only create and maintain a local database, but also write to a remote database. The **RemoteDatabaseFile** property is configured to enable this capability. See example above.

What's are the differences between the local and remote databases?

When a remote database is configured, the system will write duplicate records to the local and remote database except for the following fields:

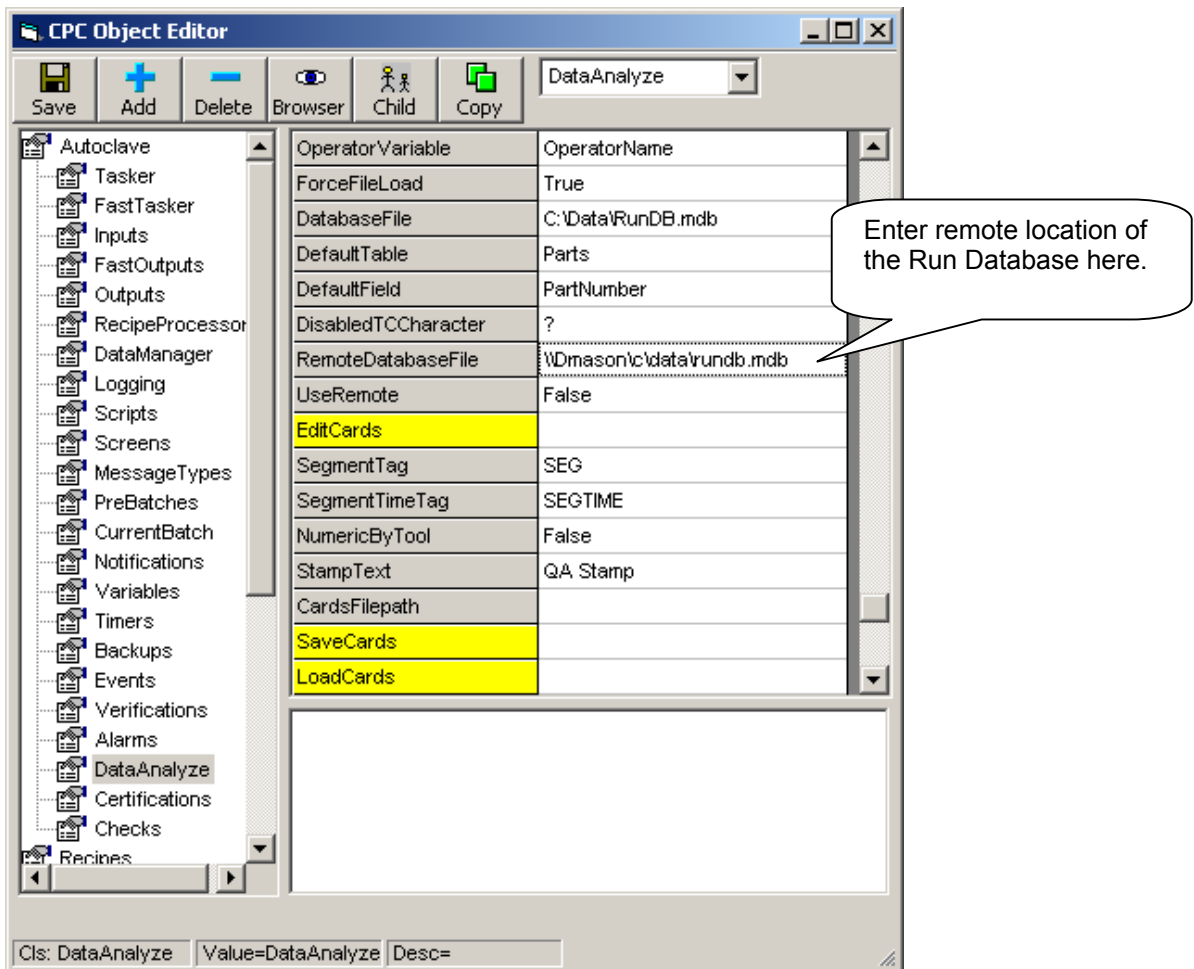
The datafile path/name written to the Runs table within the database will identify the local path on the local database (ie. C:\Data\AC4_20010110-01.DAT) and the remote archive datafile on the remote database (ie. \\Server\C\Data\AC4_20010110-01.DAT) . This allows the report screen's database search routine to properly locate and target the datafile when searching the remote database.

How do I change my reporting screen for remote data saving?

The reporting system on CPC-NT can be configured for Remote and Local dual-use. When dual-use is configured, you can easily switch from Local (database and datafiles) to Remote (database and datafiles.)

How do I configure dual-use reporting?

You can add dual-use capability by entering the path and filename of the remote run database in the **RemoteDatabaseFile** property of the DataAnalyze object.



How do I switch between Local and Remote during reporting

When the reporting system is configured for dual-use, you'll see a toggle box on the report screen that can be used to toggle between Local and Remote use.

Datafile Analysis - File Selection Screen

File | Numeric | Trend | Messages | Recipe | Reports

Current Directory: C:\DATA Use Remote Database

File/Run Information:

File	AC4-20010430-001.DAT
Path	C:\DATA
Equipment	Autoclave
Recipe	
File Date	Monday, April 30, 2001
File Time	12:46:58 PM
File Length	8613
LoadNumber	13

Reports saved in Datafile: Autoclave #4 Leak Test Report

Filter Notes: ALL

Notes for Run:

Date	Author	Part	Note

Selected Index (1 of 3): (1) X12356,,X12345..

Field Title	Field Value	PartTCs	Probes	Sources	Others
PartNumber	X12356				
SerialNumber					
ToolNumber	X12345				
PartName					
Comment					
SourceQty					

ClientPC: DMASON | ServerPC: DMASON | User: AUTOUSER | 7:23:12 PM 6/5/2001